

# NOORD SURVEY

## *Vessel specifications SV Nozem*

### **General information:**

Name: Nozem  
Flag: Dutch  
Built: 1999  
Length: 7.50 m  
Width: 2.50 m  
Draft: 0.30 m  
Gross Tonnage: 2 ton

### **Speed:**

Max speed: 30 knots  
Cruising speed: 22 knots  
Survey speed: 3-15 knots

### **Fuel consumption:**

Total capacity: 200 L gasoline  
Cruising speed: 25 L/h  
Survey speed: 5 L/h

### **Navigation equipment:**

Radar: Simrad 3G  
AIS: Class B  
VHF: 2x Standard Horizon VHF

### **Machinery:**

Engines: 1x Suzuki BF140  
Output: 1x 140 HP  
Propulsion: Outboard, single screw



### **Additional vessel information:**

There is space for 2 persons in total during survey operations, 1 skipper and 1 surveyor. The Nozem can be transported on a trailer for fast and flexible deployment

Noord-survey  
De Wirden 4  
9291 PP Kollum  
info@noord-survey.nl  
www.noord-survey.nl  
(+31)0640089211

**HIGH QUALITY  
SEABED DATA**

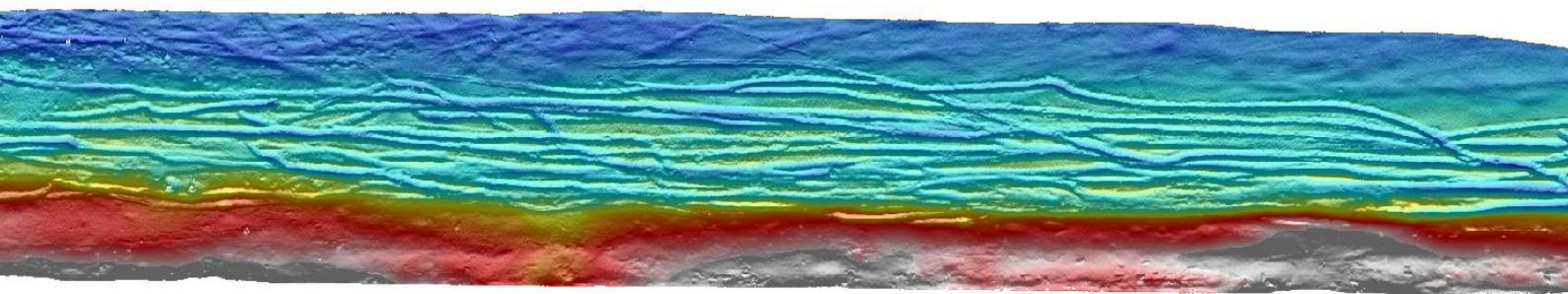
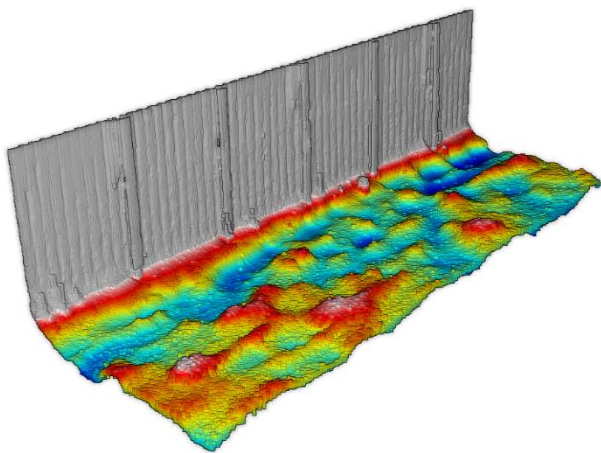


## Survey Equipment:

GNSS: Trimble BD982 dual antenna RTK  
GPS-RTK accuracy: 1 cm with Ekinox-E INS  
Gyro: Trimble BD982 with SBG Ekinox-E  
Gyro accuracy: 0.05°  
Motion: SBG Ekinox-E INS  
Motion accuracy: 0.02°, 5cm heave, 2.5cm delay heave  
Sound velocity: Teledyne Swift SVP  
Multibeam: R2sonic 2024 or Norbit iWBMS STX  
Singlebeam: Kongsberg EA440  
Transducers: 1x 200Khz 9° 1x 33khz  
Software: Navaq/Qinsy

## Additional survey equipment:

If required the Nozem can also be equipped with an ADCP, Sub bottom profiler or Towing an SSS/ magnetometer



Noord-survey  
De Wirden 4  
9291 PP Kollum  
info@noord-survey.nl  
www.noord-survey.nl  
(+31)0640089211

**HIGH QUALITY  
SEABED DATA**

