

NOORD SURVEY

Vessel specifications SV Warrior

General information:

Name: Warrior
Flag: Dutch
Built: 2003
Length: 9.55 m
Width: 3.48 m
Draft: 0.90 m
Gross Tonnage: 8 ton

Speed:

Max speed: 35 knots
Cruising speed: 24 knots
Survey speed: 3-15 knots

Fuel consumption:

Total capacity: 1000 L Diesel
Cruising speed: 65 L/h
Survey speed: 15 L/h

Navigation equipment:

Radar: Raymarine
AIS: Class A
VHF: 2x Sailor DSC VHF

Machinery:

Engines: 2x Yanmar 6 LP
Output: 2x 315 HP
Propulsion: 2x Mercruiser Z-drive



Additional vessel information:

There is space for 4 persons in total during survey operations including 1 skipper, 2 surveyors (depending on the scope of work) and a client representative. There is a toilet, refrigerator and kitchen onboard.

Noord-survey
De Wirden 4
9291 PP Kollum
info@noord-survey.nl
www.noord-survey.nl
(+31)640089211

**HIGH QUALITY
SEABED DATA**

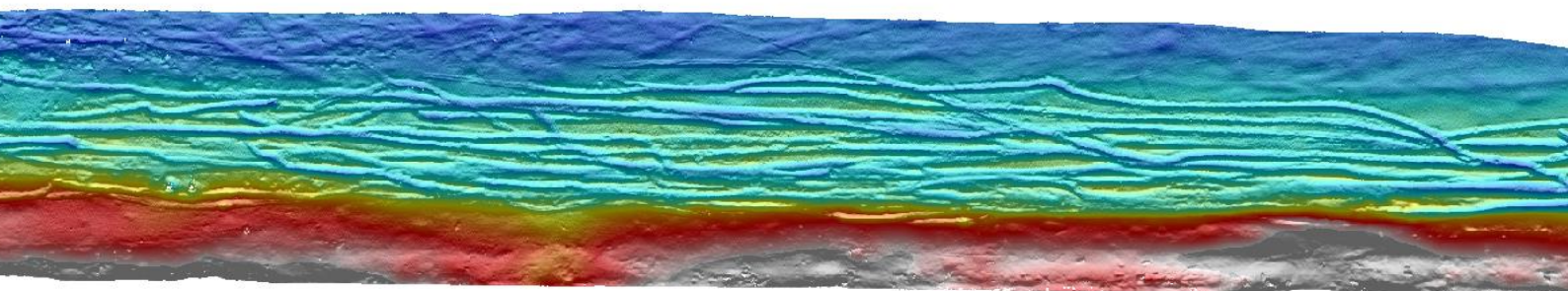
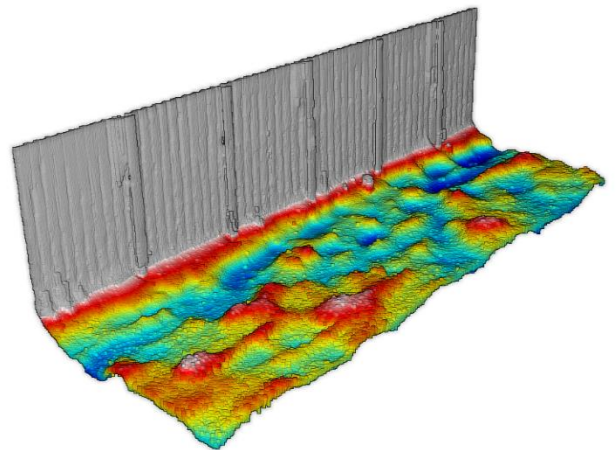
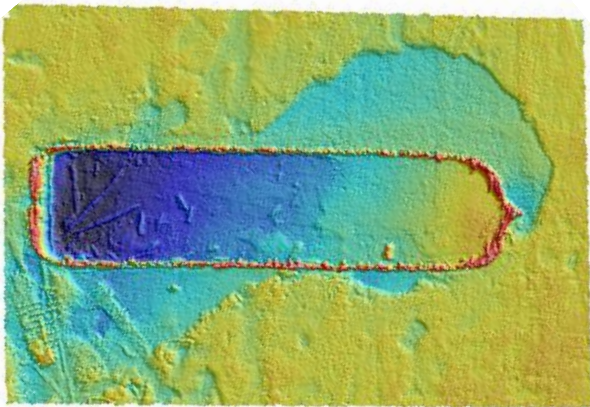


Survey Equipment:

GNSS: Kongsberg Seapath 130 RTK
GPS-RTK accuracy: 1 cm with MRU5 INS
Gyro: Kongsberg Seatpath 130 RTK
Gyro accuracy: 0.03°
Motion: Seatex MRU 5 INS
Motion accuracy: 0.02°, 5cm heave, 2.5cm delay heave
Sound velocity: Valeport Swift
Multibeam: Kongsberg EM2040c dualhead MKII
Singlebeam: Reson Navisound 620
Transducers: 2x 200Khz 9° 1x 33khz
Software: Navaq/Qinsy

Additional survey equipment:

If required the Supporter can also be equipped with an ADCP, Sub bottom profiler or Towing an SSS/ magnetometer



Noord-survey
De Wirden 4
9291 PP Kollum
info@noord-survey.nl
www.noord-survey.nl
(+31)640089211

**HIGH QUALITY
SEABED DATA**

